

The ultimate guide to setting up Google Family Link for your Childs phone

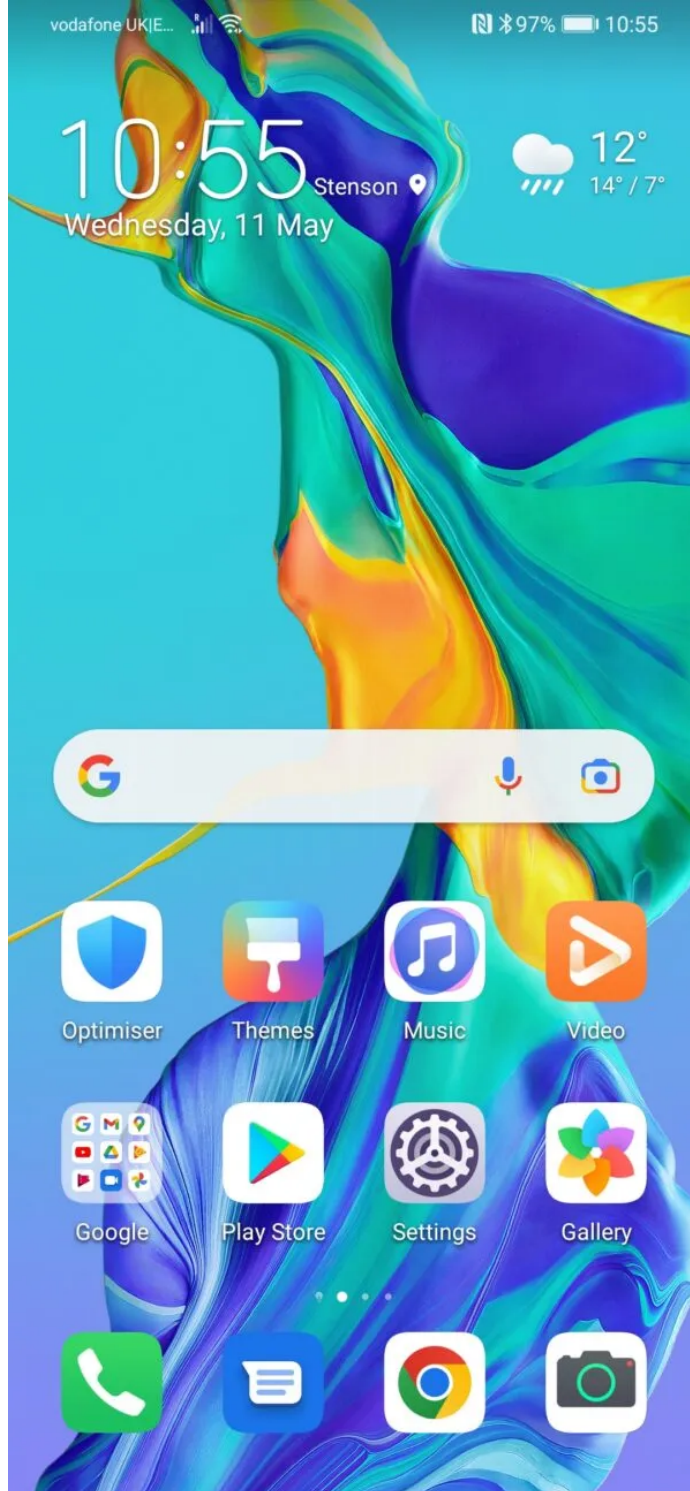
May 12, 2022

Setting up [Google Family Link](#) allows parents or carers to set permissions for their Child's [Android phone](#) remotely to set parental controls for applications and internet browsing from their own Android phone.

How to set up Family Link

Setting up the Child's phone

1a. Find the [Play Store](#) application on the Home Screen and launch this



1b. Click 'Create account' and choose 'For my child'- If you have already set up a gmail account for your child, enter the details and skip to 2



Sign in

with your Google Account. [Learn more](#)

[Forgot email?](#)

[Create account](#)

Next

1c. Click 'Yes, continue'



Create a Google Account for your child

You'll be able to manage screen time, apps and more with the Google Family Link app



Help choose what's OK to explore, buy and watch



See how much apps are used



Remotely lock devices when it's time to play, study or sleep

[No, thanks](#)

[Yes, continue](#)

1d. Enter your Childs name



Create a Google Account

Enter your child's name

First name

ParentShield

Surname (optional)

Child

Next

1e. Enter their date of birth



Basic information

Enter ParentShield's birthday and gender

[Next](#)

1f. Now create a gmail address for them



Choose how ParentShield will sign in

He'll use this email to sign in to his Google
Account

☐ parentschild@gmail.com

☐ childparentshield@gmail.com

☐ Create your own Gmail address

Next

1g. Now create a [strong_password](#)



Create a strong password

Create a strong password with a mixture of letters, numbers and symbols



Show password

[Next](#)

2a. Link them to your account by entering YOUR email address or telephone number



Parent sign-in

Google accounts for children under 15 need to be linked to a parent.

[Next](#)

2b. Scroll to the bottom and agree to the terms and conditions

Account for my child and process their information as described above and further detailed in the Privacy Notice for Google Accounts managed with Family Link and the [Google Privacy Policy](#). I declare under oath that I am the legal representative of my child and am authorised to provide this consent.

☐

I understand that my child's Google Account is like my own and will provide access to general audience services that have not been designed for children and that will enable my child to do things like communicate with others and see content I may consider inappropriate. I also agree to the [Google Terms of Service](#), the [YouTube Terms of Service](#) (both of which include information about your 14-day withdrawal right) and the [Google Play Terms of Service](#) on behalf of my child and understand that all terms apply to my account and to the account that I create for my child.

☐

Have questions? [Contact us](#)

Do you agree?

To create an account for your child, you must agree to the parental consent and sign in on the next screen to verify that you're a parent.

[Cancel](#)

[Agree](#)

2c. Now enter YOUR password



Enter your password



When you enter your password, you confirm that you agree to the [parental consent](#) and want to create a Google Account for ParentShield.

Next, Google will check your Google Account info to verify that you're a parent. [Learn more](#)

☐ Show password

[Forgot password?](#)

Next

2d. Now agree to the terms and conditions to set up your Childs account.

- Account for my child and process their information as described above and further detailed in the Privacy Notice for Google
- ☐ Accounts managed with Family Link and the [Google Privacy Policy](#). I declare under oath that I am the legal representative of my child and am authorised to provide this consent.

- I understand that my child's Google Account is like my own and will provide access to general audience services that have not been designed for children and that will enable my child to do things like communicate with others and see content I may consider inappropriate. I also agree to
- ☐ the [Google Terms of Service](#), the [YouTube Terms of Service](#) (both of which include information about your 14-day withdrawal right) and the [Google Play Terms of Service](#) on behalf of my child and understand that all terms apply to my account and to the account that I create for my child.

Have questions? [Contact us](#)

Do you agree?

To create an account for your child, you must agree to the parental consent and sign in on the next screen to verify that you're a parent.

[Cancel](#)

[Agree](#)

2e. Finally enter YOUR password again. Then a notification will come to YOUR phone for you to accept. Once you press accept it will finalise the account set up.

2f. Now – back to the Childs phone – you can choose the the settings personalisation. We chose the Express personalisation as you can change things as you go, but you can manually configure it now if you wish.



Choose personalisation settings for ParentShield



Express personalisation

Use personalisation settings that deliver tailored content and recommendations to your child.



Manual personalisation

Configure your child's personalisation settings step by step. You decide which settings should be on or off to provide the Google experience that's right for your child.

You can change your child's settings in the Family Link app or at g.co/YourFamily

Next

2g. Confirm the personalisation of cookies.



Confirm ParentShield's personalisation settings and cookies

These settings will use ParentShield's data to give them a personalised experience across services



Web & App Activity

This setting will be turned on for things like faster searching, more relevant results, and more helpful app and content recommendations. [Learn more](#)



YouTube History

This setting will be turned on for things like more relevant video recommendations and to help remember where ParentShield left off while watching a video. [Learn more](#)



Manage Activity controls

Both you and ParentShield will be able to manage Web & App Activity and YouTube History settings.

What data is used

Web & App Activity saves your child's activity on Google sites and apps, like Search and Maps, and includes associated info like location. It also saves synced Chrome history and activity from sites, apps and devices that use Google services. You can also choose to save your child's

2h. Agree to the Privacy



Privacy

Remember that the Family Link Privacy Notice (<https://g.co/FamilyLink/PrivacyNotice>) and the Google Privacy Policy (<https://policies.google.com/privacy>) describes how Google handles information that we collect directly from you and your child, such as names and email addresses, as well as information generated from your child's use of Google's services, such as device information, log information and location information.

It also includes information about why we process data, such as when we are pursuing legitimate interests while applying appropriate safeguards that protect you and your child's privacy. This means that we process your child's information for things like:

- Providing, maintaining and improving our services to meet the needs of our users
- Developing new products and features that are useful for our users
- Understanding how people use our services to ensure and improve the performance of our services
- Customising our services to provide your child with a tailored user experience
- Providing contextual advertising, which keeps many of our services free

Detecting, preventing or otherwise

2i. You can then add a second parent if you wish. We skipped this and pressed 'Next' in Review settings.



Review Settings

Take a minute to make sure that you're comfortable with these Google settings for ParentShield



Controls on Google Play



Some parental controls that filter Play Store content are on. Parental approval required for new purchases and downloads.



Filters on Google Chrome



Filters for mature sites are on



Filters on Google Search



Filters for sexually explicit results are on

You can make changes to these and other essential settings with Family Link

Next

3a. The account set up is now complete and It'll ask you to activate Family Link Manager. Press 'next'



Activate Family Link Manager

Next, you'll activate Family Link Manager, which helps parents to manage this device from Family Link. This step is required.

[Next](#)

3b. Choose 'Activate'

← Activate profile manager



Family Link Manager

By proceeding, the personal data and associated data of your User account will be managed by your Administrator account.

The Administrator has the ability to monitor and manage settings, access, apps, and data associated with this User account, including network activity and your device's location information.

Family Link Manager will be installed to help parents supervise the activity on this device.

Activating this administrator will allow Google Play services to perform the following operations:

Set password rules

- Control the length and the characters allowed in lock screen passwords and PINs.

Monitor screen unlock attempts

- Monitor the number of incorrect passwords entered when unlocking the screen, and lock the phone or erase all the phone's data if too many incorrect passwords are entered.

Lock the screen

- Control how and when the screen locks.

Set lock screen password expiration

- Change how frequently the lock screen password, PIN, or pattern must be changed.

Set storage encryption

- Require that stored app data be encrypted.

Disable cameras

ACTIVATE

CANCEL

3c. Now you'll have an opportunity to remove any apps that are already installed on the phone that you don't want them to access. Press 'more' when finished.



Review apps

These apps come with this phone. You can remove the ones that you don't want ParentShield to use. You'll be able to see ParentShield's [app activity in Family Link](#).

3

PEGI 3

Booking.com

Chrome

Docs

Drive

Duo

More

3d. Now click 'Install Family Link', and also agree to location services if you get this prompt.



Manage parental controls

To manage ParentShield's settings remotely, auto-install the Family Link app onto your **HUAWEI CLT-L09**



- ① Adjust screen time settings at any time using the parental controls app on this device

[Skip](#)

[Install Family Link](#)

3e. Press 'Next'



Look for Family Link on your device

Family Link will be installed on your device.
You can remotely supervise ParentShield
from there.

[Next](#)

3f. Press 'More'



Google services

Child's account: parentshieldchild@gmail
.com

As a parent, you can tap to learn more about each service, such as how to turn it on or off later. Data will be used according to Google's [Privacy Policy](#).

Backup and storage



Back up to Google Drive



Easily restore data or switch devices at any time. This backup includes apps, app data, call history, contacts, device settings (including Wi-Fi passwords and permissions) and SMS.

Backups are uploaded to Google and encrypted using your child's Google Account password. For some data, the device's screen lock PIN, pattern or password is also used for encryption.

More

3g. Press 'Accept'

Google services

Child's account: parentshieldchild@gmail
.com

As a parent, you can tap to learn more about each service, such as how to turn it on or off later. Data will be used according to Google's [Privacy Policy](#).

Backup and storage



Back up to Google Drive



Easily restore data or switch devices at any time. This backup includes apps, app data, call history, contacts, device settings (including Wi-Fi passwords and permissions) and SMS.

Backups are uploaded to Google and encrypted using your child's Google Account password. For some data, the device's screen lock PIN, pattern or password is also used for encryption.

Tap 'Accept' to confirm your selection of these Google services settings.

Accept

4a. The devices are now connected – Press 'Next'



Your devices are connected

You can now use Family Link on your device to customise parental controls for Google Play, Chrome and other services.



Make sure that you're comfortable with ParentShield's settings before handing this phone to him.

Next

4.b Supervision is now ready and the device is fully synced – Press 'OK' and accept the Terms of Service.



Supervision ready!

You can now hand this device over to
ParentShield



Stay in the loop!

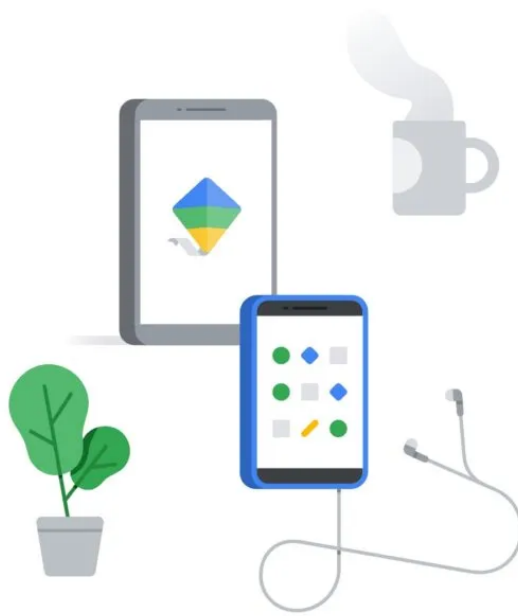
Get emails with the latest news, tips and product updates for children and families from Google, plus opportunities to share your feedback



OK

Managing their phone from your phone

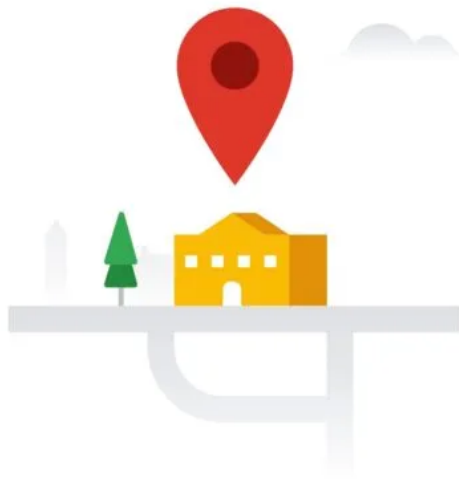
5a. Search for the Family Link application that will have been downloaded on YOUR phone remotely. Launch the app



Help set digital ground
rules for children and
teenagers



5b. Scroll to the bottom and press 'Get Started'

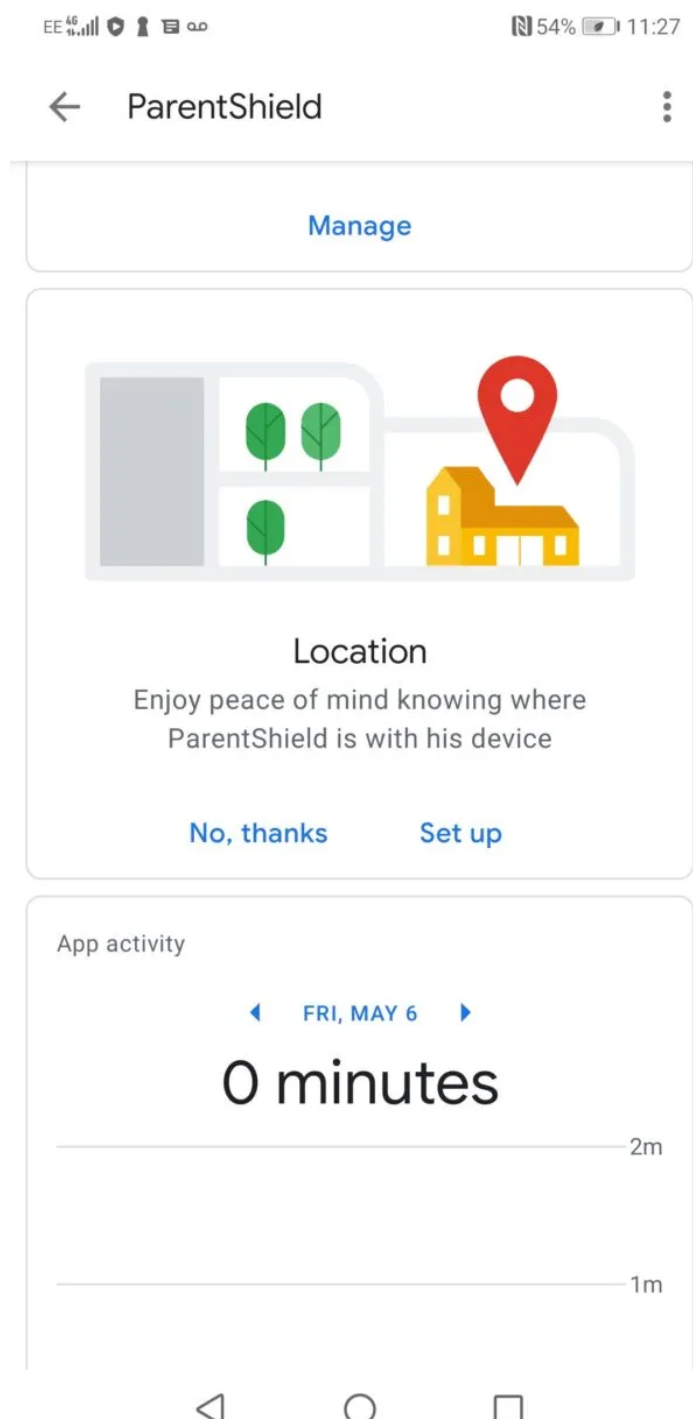


Locate your child's device
at a glance

Get started

You're just about sorted!

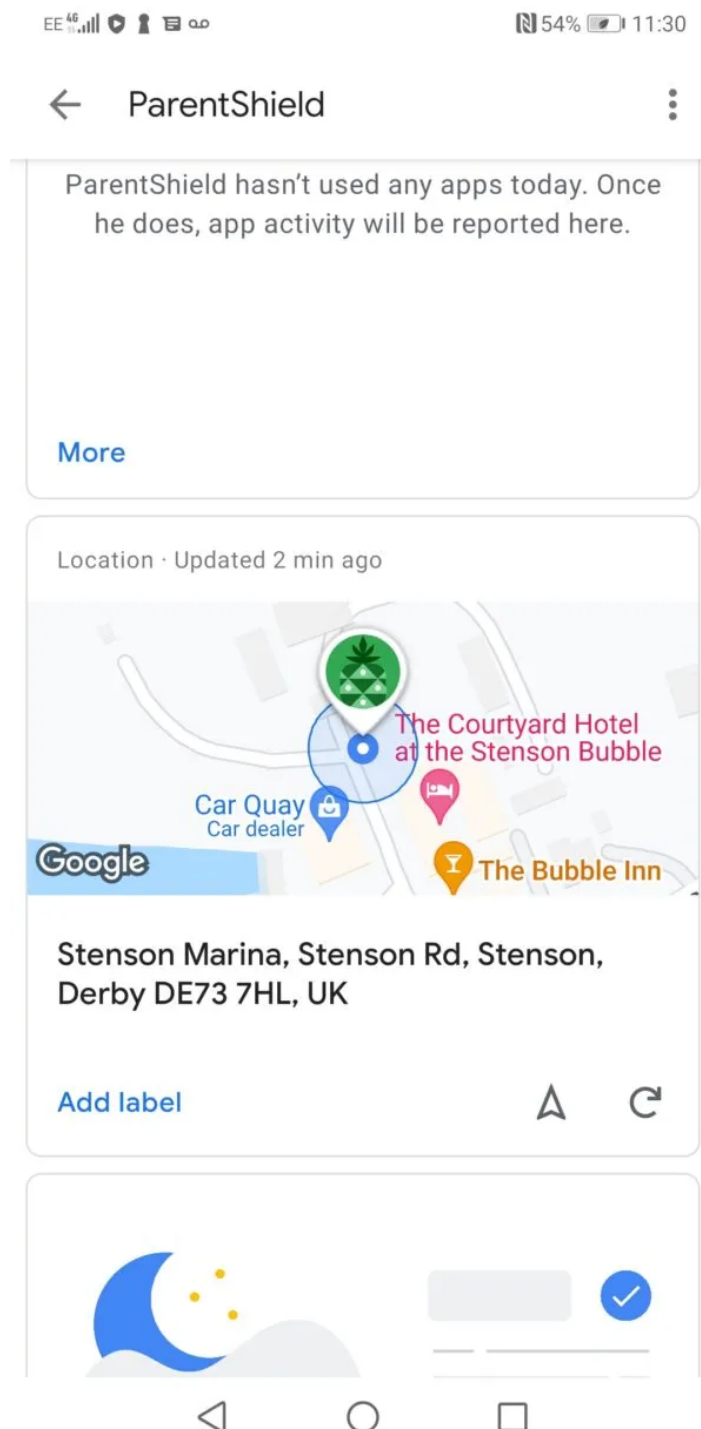
6a. Now you're into the control panel. Firstly goto the Location section and click 'Set up' and choose 'Turn on location' if you get that prompt.



6b. You can see your Child's location at a glance for this control panel at any time.

Note: a data connection is required to locate your Child's phone, so make sure that mobile data is properly configured on their phone as in our guide here <https://parentshield.co.uk/data-guide/> and that mobile data is switched on in your portal. Also, that there is some cash balance to use for data if on [Safe Stage 1](#).

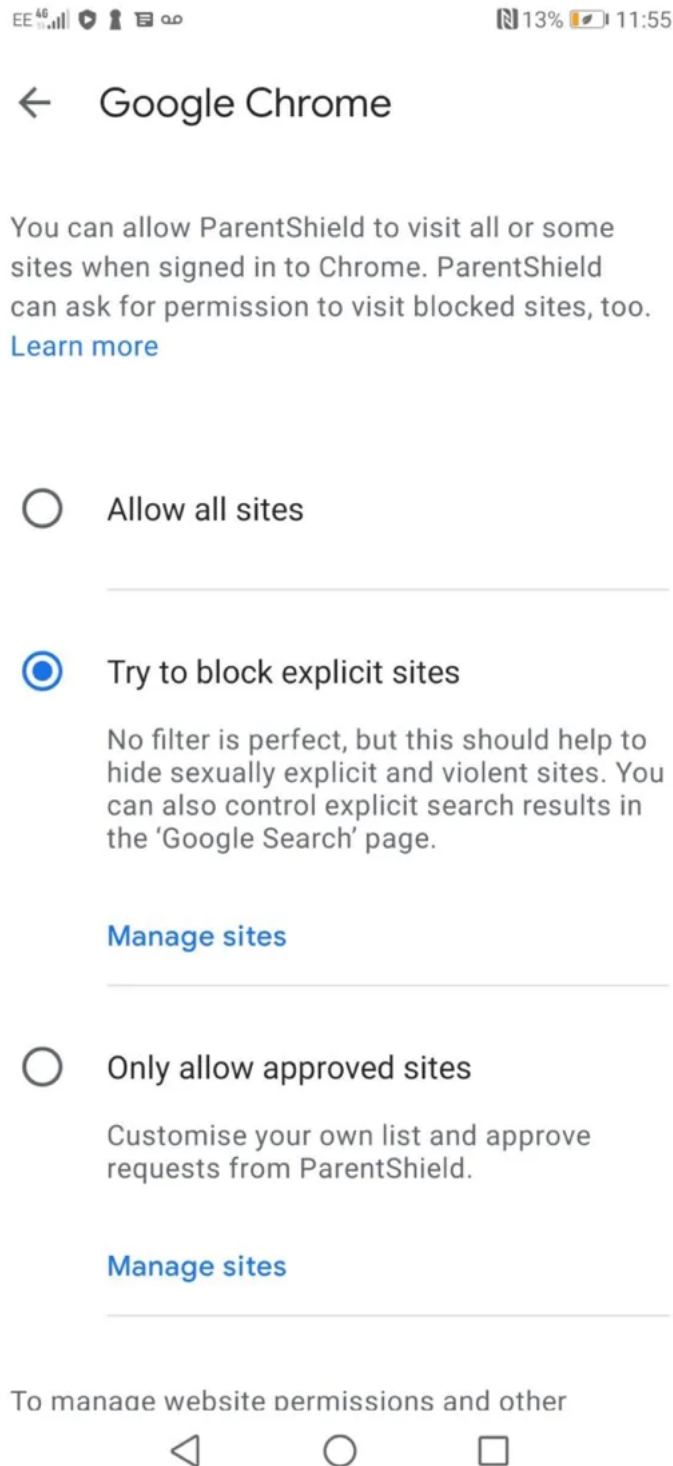
Tip: If you don't want the child to access data, and only want it for location purposes, you can leave data switched off in the portal and then when you want to locate the phone, switch data on, do the lookup and then switch it off again. Lookups work out at around 1p each at PAYG rates.



6c. Now look for Settings and click 'Manage' and click into Google Chrome and choose 'Try to block explicit

sites'

Note: If you want to block everything expect a pre-approved list of websites, then choose 'Only allow approved sites' and create an allow list.



All sorted!

Have a look around the other settings to double check

that all the other applications have age-appropriate restrictions to tailor your Childs access to all things online in concert with the unique parental controls and monitoring capabilities available from your ParentShield portal <https://parentshield.co.uk/portal-guide/>

Now click on the image below to get a Child-Safe SIM card

A promotional banner for ParentShield. The background is a solid bright yellow. On the right side, there is a photograph of a young girl with long blonde hair in pigtails, wearing a colorful striped shirt and denim overalls, smiling and looking down at a pink smartphone she is holding. In the top left corner of the banner, the ParentShield logo is displayed, which includes a shield icon with a speech bubble and the text 'ParentShield The Child-Safe Mobile Network'. Below the logo, the text 'They get their first mobile. And you get Peace of Mind.' is written in a mix of pink and black fonts. At the bottom left, there is a black-outlined rounded rectangle containing the text 'Child-Safe Sim Cards' in black.

 **ParentShield**
The Child-Safe Mobile Network

They get their **first mobile.**
And you get **Peace of Mind.**

Child-Safe Sim Cards